

Z-3113**Engine Timing Kit**

A comprehensive timing tool set that includes the tools required to set both camshafts and crankshafts as well as remove and install the vanos unit.

Specifically designed for M42, M43, M50, M52 and M60 petrol engines as well as the M51 diesel engine.

(refer to BMW engine chart below to identify your engine type).

Applications

316i | 318i | 320i | 325i | 328i | 325D | 518i | 520i
525i | 528i | 525D | 725TDS (1990 - 2006)

For full vehicle application and other tools required go to: www.lasertools.co.uk/toolpoint

For



PETROL

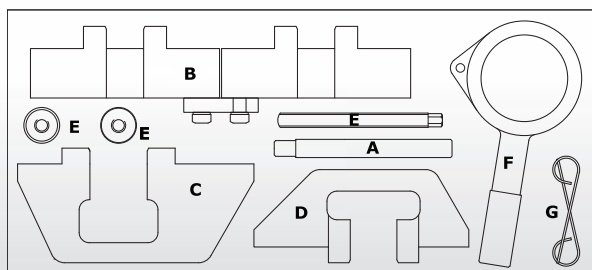
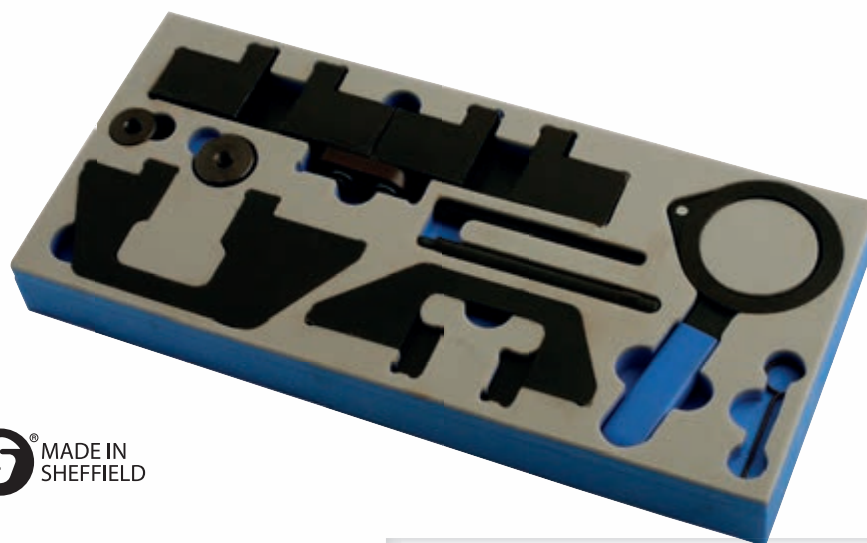


DIESEL

CHAIN
DRIVEN

**METAL
CASE!
AVAILABLE**
PART NO 4544

**MADE IN
SHEFFIELD**



Component Codes

ID	Code	OEM Ref	Description
A	C020	11-2-300	Crankshaft Locking Pin
B	C021	11-3-240	Camshaft Clamp Assembly (Twin-cam)
C	C022	11-3-190	Camshaft Timing Tool (Petrol)
D	C023	11-3-320	Camshaft Timing Tool (Diesel)
E	C024	11-4-220/11-3-390	Primary Timing Chain Pre-load Tool
F	C025	11-5-490	VANOS Unit Engagement Wrench
G	C026	11-3-292	Tensioner Locking Pins (2)

BMW Engine Chart

Engine Code	Identification	Engine Code	Identification
M10	4 cylinder 1.6, 1.8, 2.0	M57	3.0 diesel
M20	6 cylinder 2.0, 2.3, 2.5, 2.7	M60	8 cylinder 3.0, 4.0 (32 valves)
M21	6 cylinder 2.4 (turbo charged and naturally aspirated diesel)	M62	V8 3.5, 4.4
M30	6 cylinder 2.5, 2.8, 3.0, 3.2, 3.4, 3.2 turbo, 3.5 turbo	M70	12 cylinder 5.0 (24 valves)
M40	4 cylinder 1.6, 1.8 (8 valves)	M73	12 cylinder 5.4 (24 valves)
M41	4 cylinder diesel	M88	6 cylinder 3.5 (24 valves) M1 engine
M42	4 cylinder 1.8 (16 valves)	S14	4 cylinder 2.0, 2.3, 2.5 (16 valves)
M43	4 cylinder (316i, 318i, 518i) - updated 1993	S38	6 cylinder 3.6 (24 valves) M5 315bhp
M44	4 cylinder 1.9 (multi-valve)	S38	6 cylinder 3.8 (24 valves) 340bhp larger bucket tappets
M47	4 cylinder 2.0 diesel (8 valves)	S50/B30	6 cylinder 3.0 (24 valves) M3 286bhp
M50	6 cylinder 2.0, 2.5 (24 valves)	S50/B32	6 cylinder 3.2 (24 valves) M3 321bhp
M51	6 cylinder 2.5 diesel (12 valves)	S62	V8 (32 valves) M5
M52	6 cylinder 2.0, 2.5, 2.8 (petrol/steel lined)	S70/1	V12 5.6 (24 valves) 850CSI
M54	6 cylinder 2.2, 2.5, 3.0 (24 valves)		